

Re-Visiting Feedback to Transfer-Originating Institutions



COTA Conference on Transfer and Articulation
Columbia, Missouri
February 11, 2011

Mr. Lawrence W. Westermeyer
Director, Institutional Research
University of Missouri - St. Louis

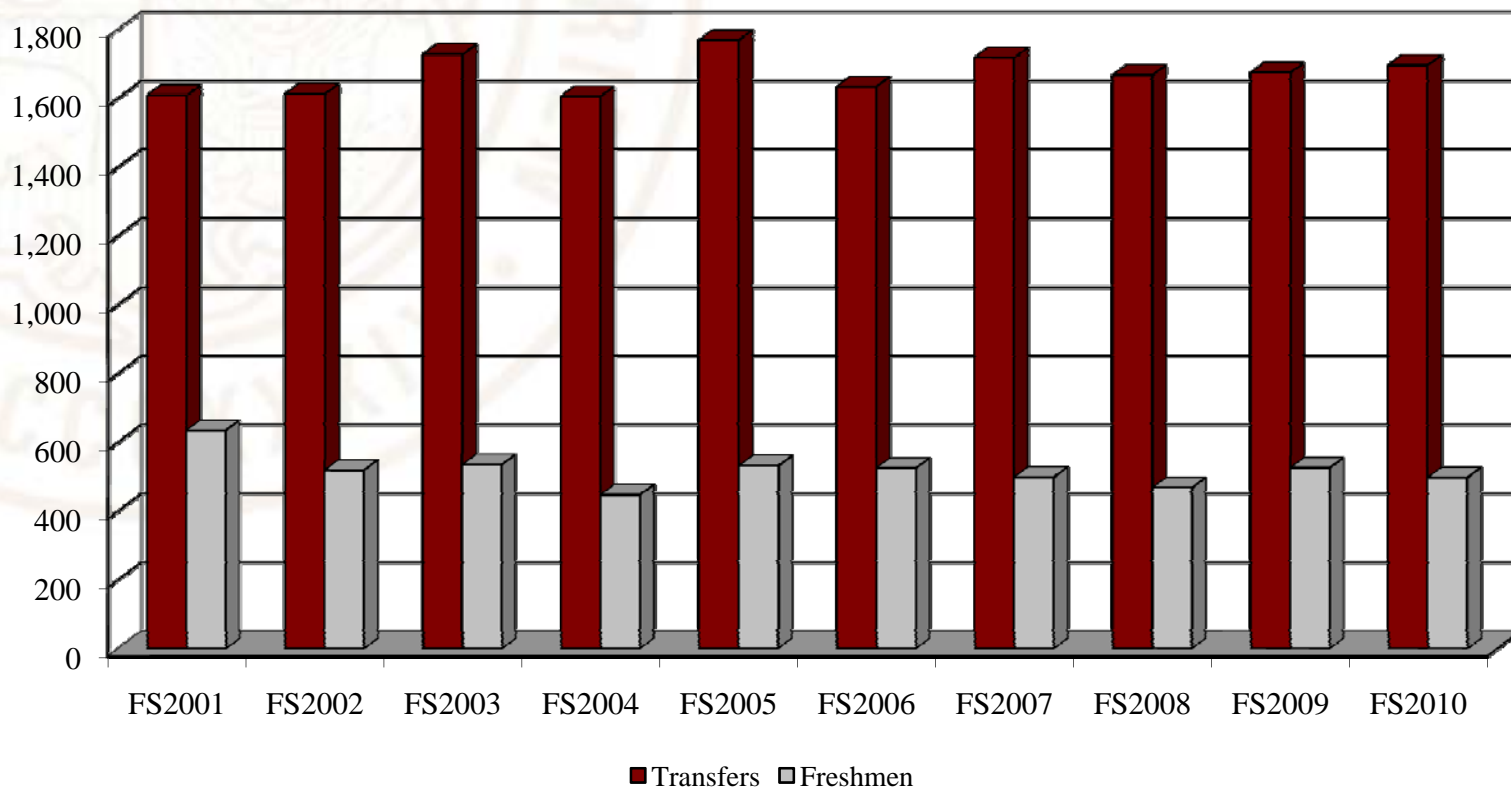


Overview

- ❑ **Background**
- ❑ **Goals**
- ❑ **Data**
- ❑ **Uses**
- ❑ **Questions and answers**



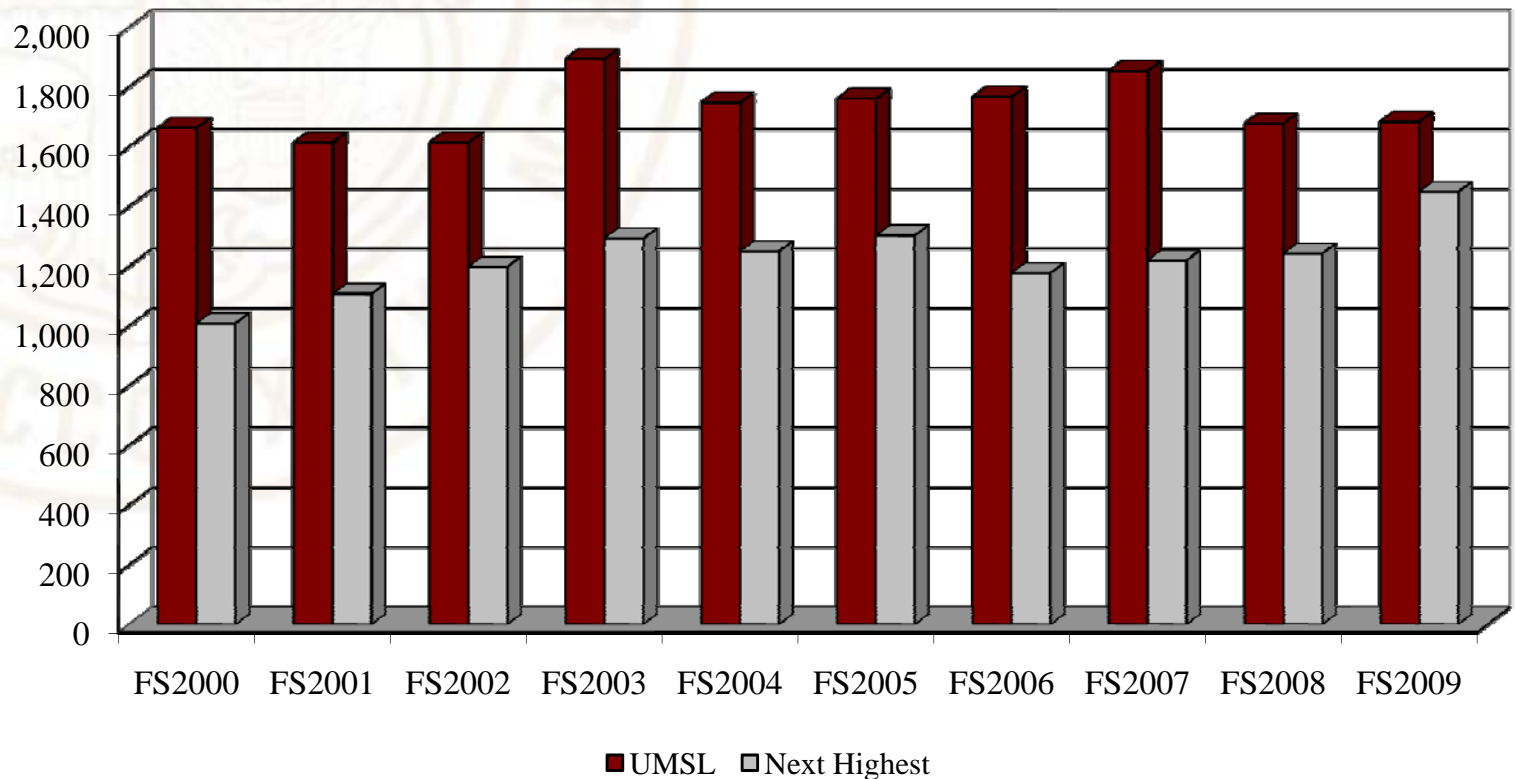
Background



Transfers are the majority of new UMSL students



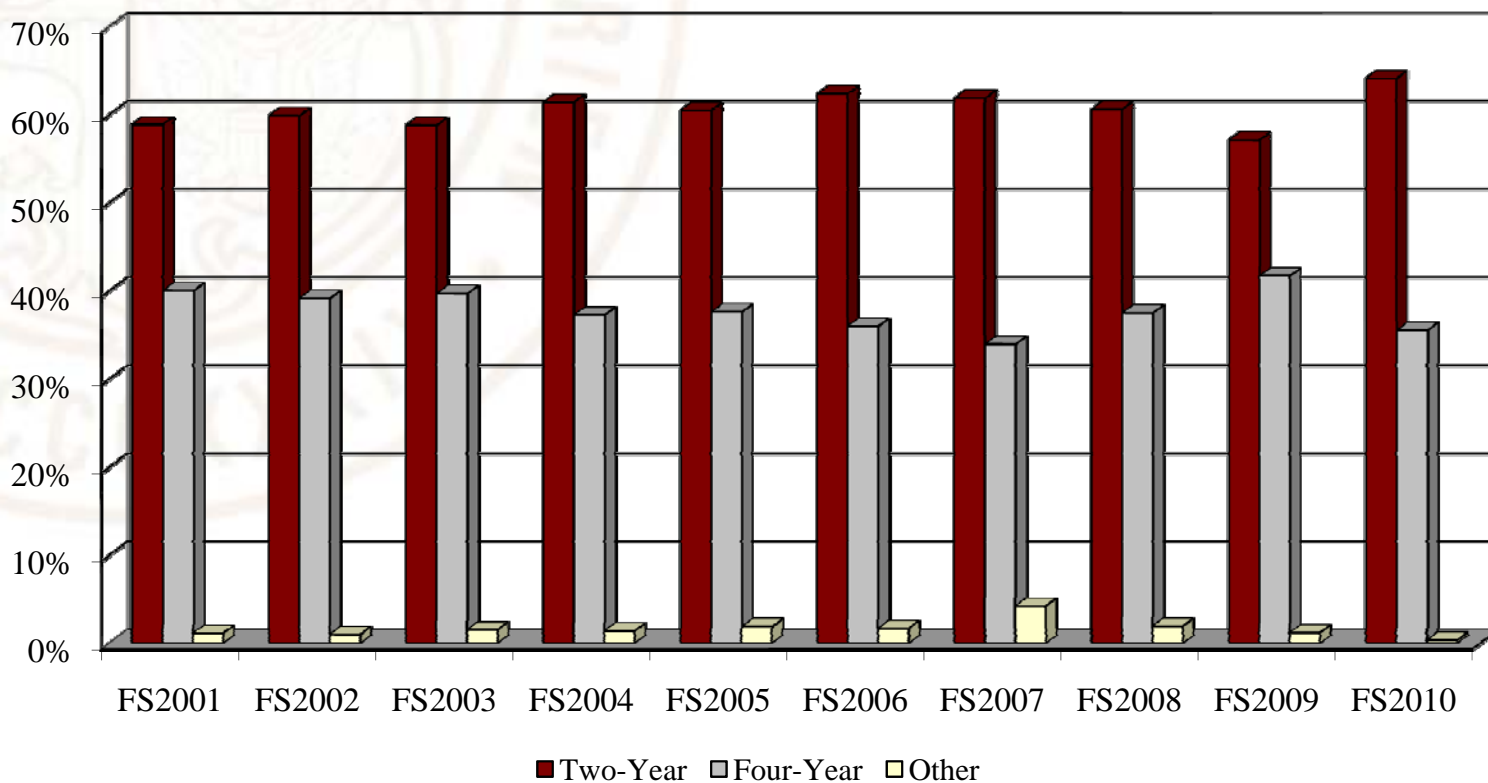
Background



Transfers by fall term



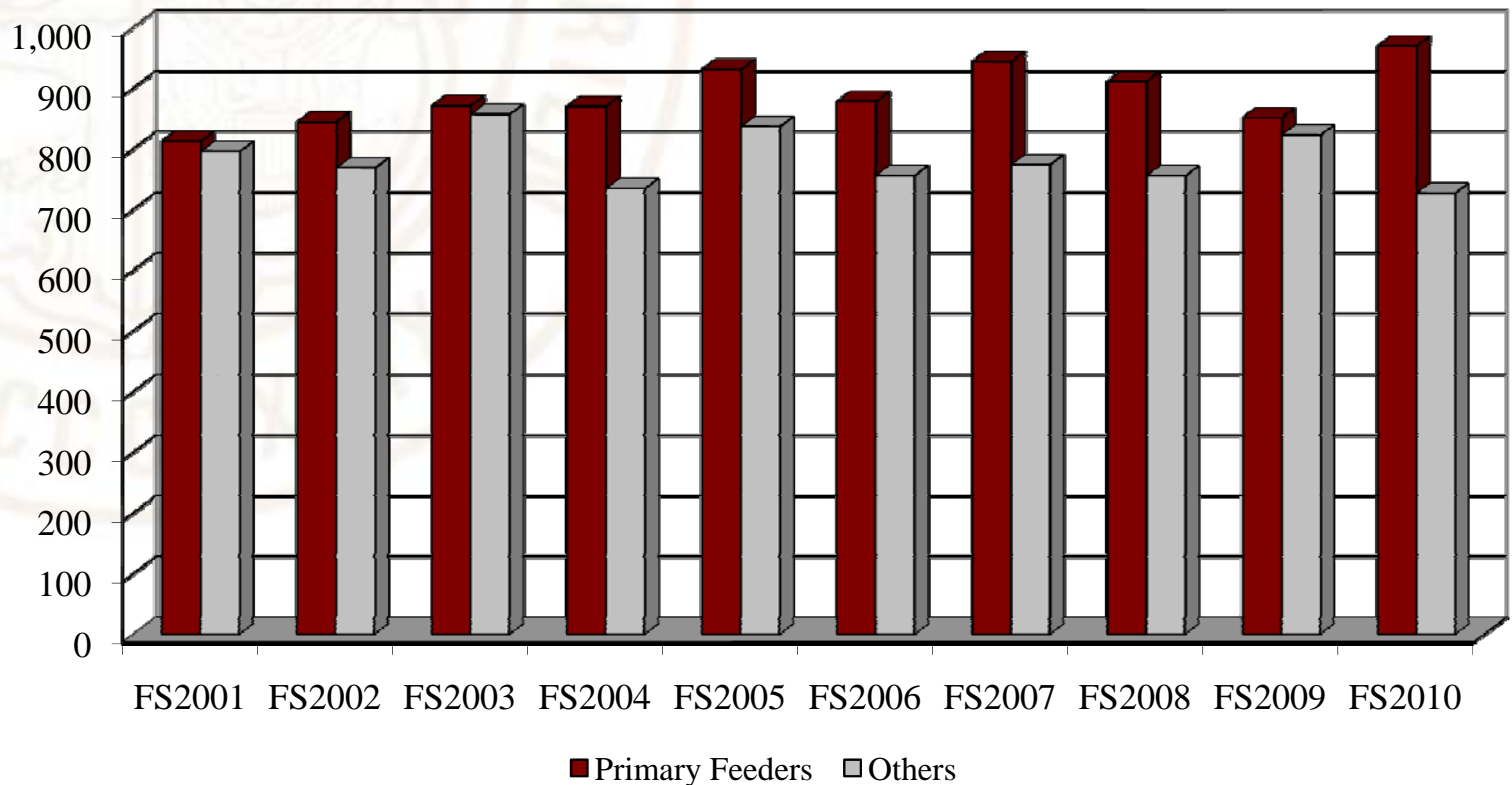
Background



Most recently attended a two-year institution



Background



Nine institutions provide half the transfers



Goals

- ❑ Help students succeed
- ❑ Critically examine transfer student performance myths
- ❑ Highlight academic successes and challenges
- ❑ Provide meaningful, actionable data



Goals

- ❑ Help measure transfer preparation mission
- ❑ Supplement existing resources
- ❑ Provide feedback to institutions
- ❑ Encourage collaboration
- ❑ Build stronger relationships



Data

- ❑ Population - on-campus undergraduates
- ❑ Summary levels
 - ❑ Institutional
 - ❑ Aggregate



Data

- ❑ Institutional level groupings
 - ❑ Selected institution
 - ❑ Selected institution plus others
 - ❑ Native
 - ❑ Other two-year
 - ❑ Other four-year
 - ❑ Other (military credit, CLEP, etc.)



Data

- ❑ Aggregate level groupings
 - ❑ One two-year
 - ❑ Multiple two-year
 - ❑ Native
 - ❑ One four-year
 - ❑ Multiple four-year
 - ❑ Other (military credit, CLEP, etc.)



Data

- ❑ Demographics
- ❑ Performance
- ❑ Degree recipients
- ❑ Graduation rates



Data

- ☐ Demographics
 - ☐ Gender
 - ☐ Ethnic origin
 - ☐ Enrollment status
 - ☐ Awards/hours earned

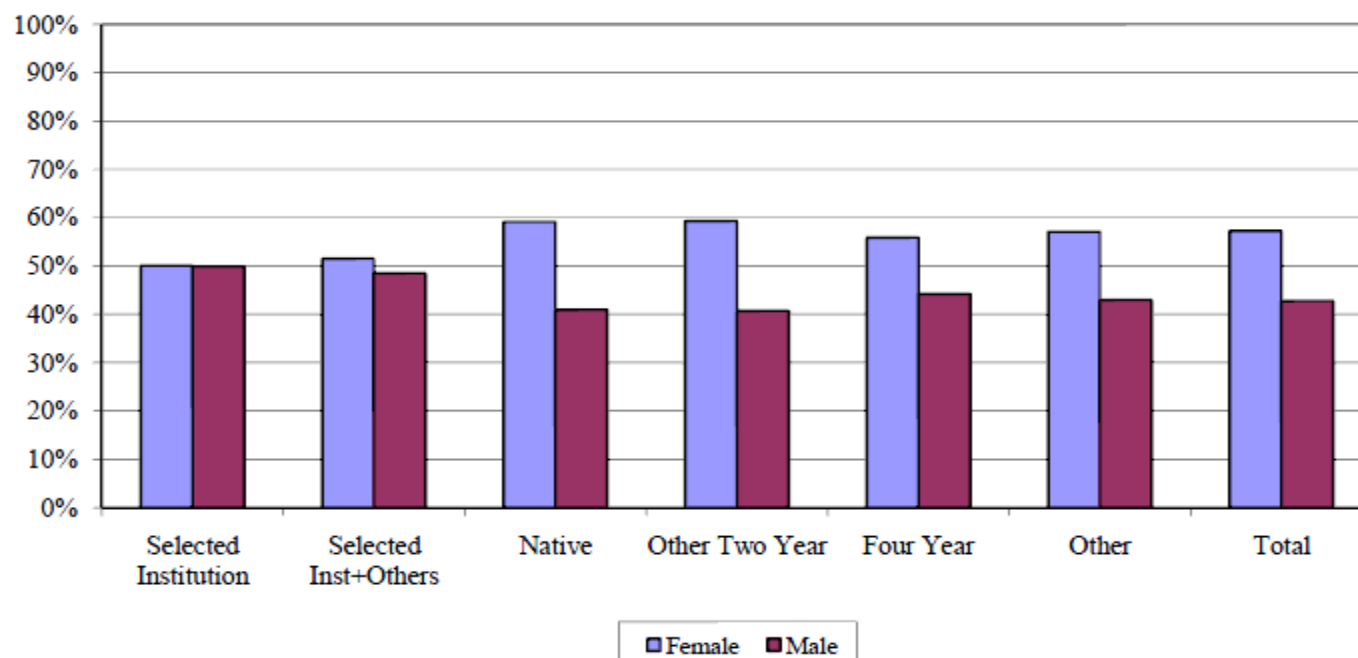


Selected Demographic Characteristics of Fall 2010 On-Campus Undergraduate Students

Sample Institution

Group	Total	Gender		Ethnic Origin							Enrollment Status			
		Female	Male	AfrAm	AmIn	AsPI	Hisp	NRI	Unk	Whi	FTC	Xfer	Cont	Readm
Selected Institution	515	50%	50%	5%	0%	5%	2%	1%	9%	78%	0%	28%	68%	4%
Selected Inst+Others	625	52%	48%	6%	0%	5%	2%	0%	11%	76%	0%	21%	73%	6%
Native	2,118	59%	41%	22%	0%	4%	2%	6%	8%	59%	24%	0%	72%	5%
Other Two Year	3,190	59%	41%	25%	0%	2%	3%	0%	11%	59%	0%	26%	70%	4%
Four Year	2,328	56%	44%	23%	0%	3%	2%	1%	11%	60%	0%	30%	63%	7%
Other	561	57%	43%	16%	0%	2%	2%	29%	7%	44%	0%	14%	79%	6%
Total	9,337	57%	43%	21%	0%	3%	2%	4%	10%	61%	5%	20%	69%	5%

Distribution by Gender

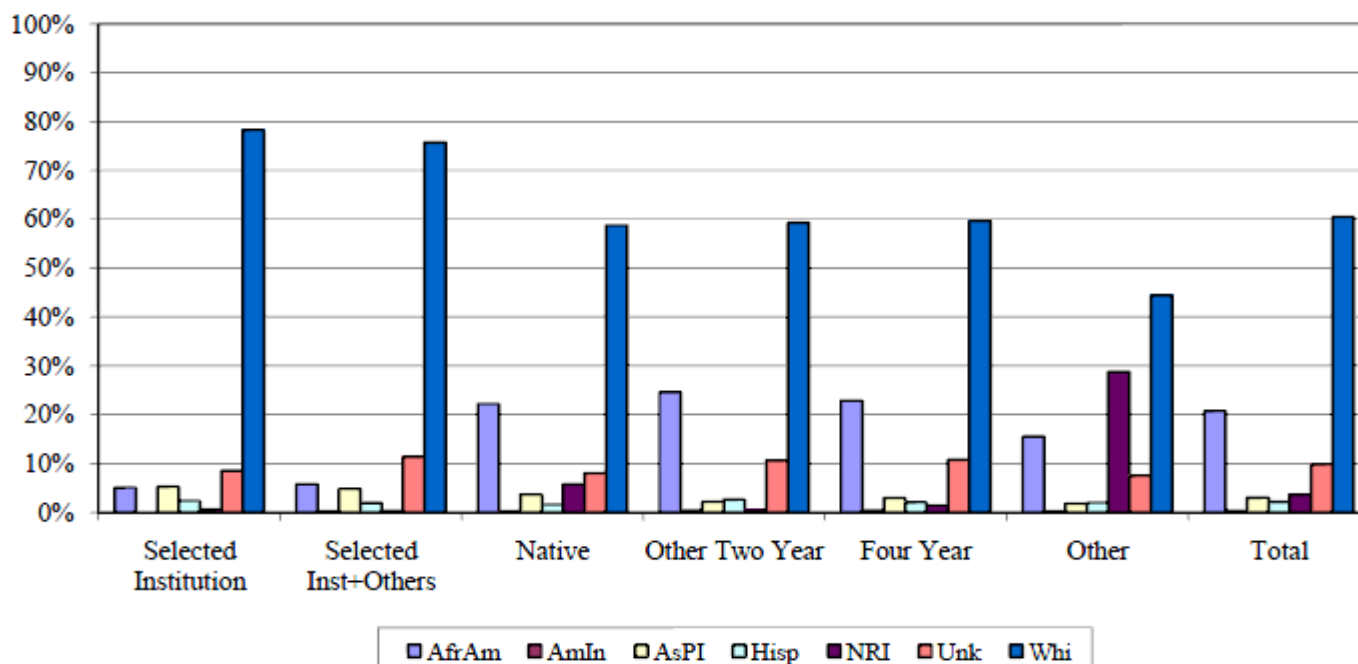


Selected Demographic Characteristics of Fall 2010 On-Campus Undergraduate Students

Sample Institution

Group	Total	Gender		Ethnic Origin							Enrollment Status			
		Female	Male	AfrAm	AmIn	AsPI	Hisp	NRI	Unk	Whi	FTC	Xfer	Cont	Readm
Selected Institution	515	50%	50%	5%	0%	5%	2%	1%	9%	78%	0%	28%	68%	4%
Selected Inst+Others	625	52%	48%	6%	0%	5%	2%	0%	11%	76%	0%	21%	73%	6%
Native	2,118	59%	41%	22%	0%	4%	2%	6%	8%	59%	24%	0%	72%	5%
Other Two Year	3,190	59%	41%	25%	0%	2%	3%	0%	11%	59%	0%	26%	70%	4%
Four Year	2,328	56%	44%	23%	0%	3%	2%	1%	11%	60%	0%	30%	63%	7%
Other	561	57%	43%	16%	0%	2%	2%	29%	7%	44%	0%	14%	79%	6%
Total	9,337	57%	43%	21%	0%	3%	2%	4%	10%	61%	5%	20%	69%	5%

Distribution by Ethnic Origin

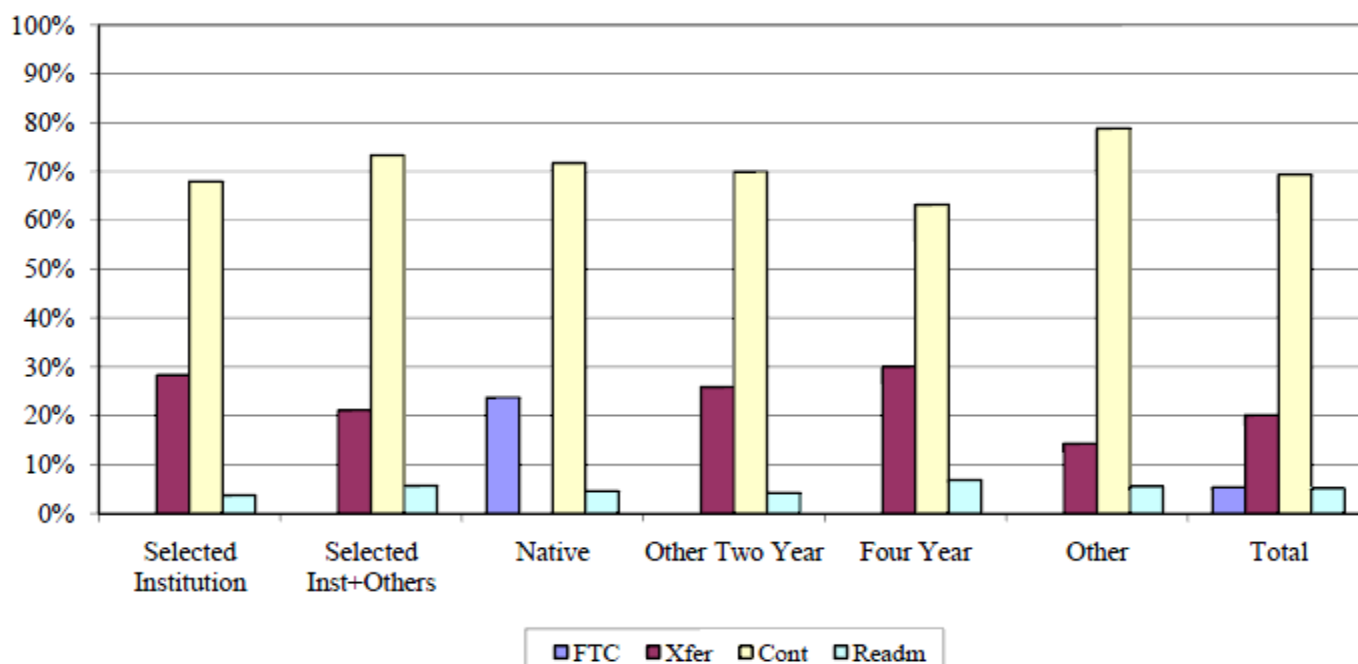


Selected Demographic Characteristics of Fall 2010 On-Campus Undergraduate Students

Sample Institution

Group	Total	Gender		Ethnic Origin							Enrollment Status			
		Female	Male	AfrAm	AmIn	AsPI	Hisp	NRI	Unk	Whi	FTC	Xfer	Cont	Readm
Selected Institution	515	50%	50%	5%	0%	5%	2%	1%	9%	78%	0%	28%	68%	4%
Selected Inst+Others	625	52%	48%	6%	0%	5%	2%	0%	11%	76%	0%	21%	73%	6%
Native	2,118	59%	41%	22%	0%	4%	2%	6%	8%	59%	24%	0%	72%	5%
Other Two Year	3,190	59%	41%	25%	0%	2%	3%	0%	11%	59%	0%	26%	70%	4%
Four Year	2,328	56%	44%	23%	0%	3%	2%	1%	11%	60%	0%	30%	63%	7%
Other	561	57%	43%	16%	0%	2%	2%	29%	7%	44%	0%	14%	79%	6%
Total	9,337	57%	43%	21%	0%	3%	2%	4%	10%	61%	5%	20%	69%	5%

Distribution by Enrollment Status

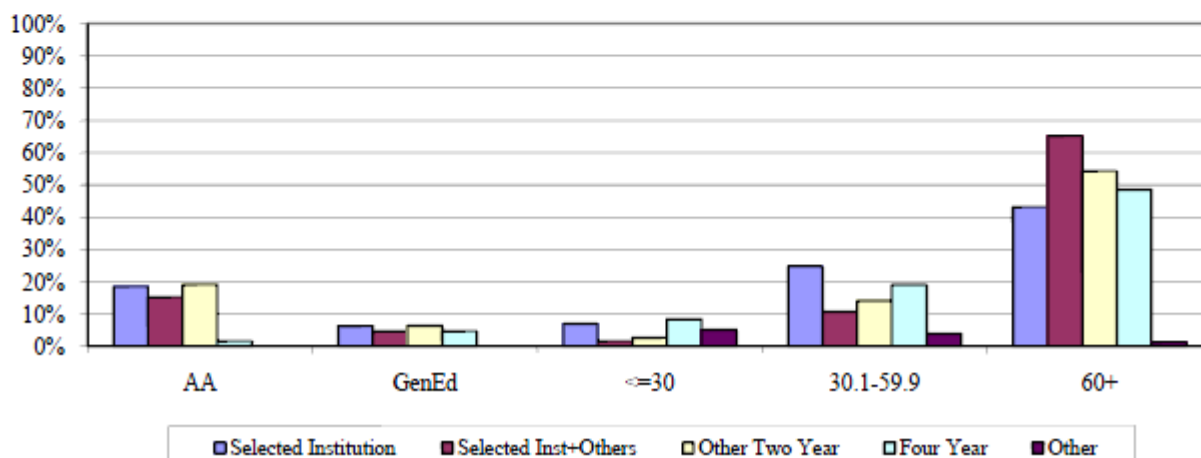


Award/Hours Earned Prior to Transfer Fall 2010 On-Campus Undergraduate Students

Sample Institution

Group	Total Transfers	AA	GenEd	<=30	30.1-59.9	60+	Avg Hrs Transferred
Selected Institution	146	18%	6%	7%	25%	43%	67.2
Selected Inst+Others	132	15%	5%	2%	11%	65%	88.1
Other Two Year	825	19%	6%	3%	14%	54%	84.0
Four Year	698	2%	5%	8%	19%	48%	83.5
Other	80			5%	4%	1%	44.9
Total	1,881	11%	5%	5%	16%	50%	82.5

Award/Hours Earned Prior to Transfer

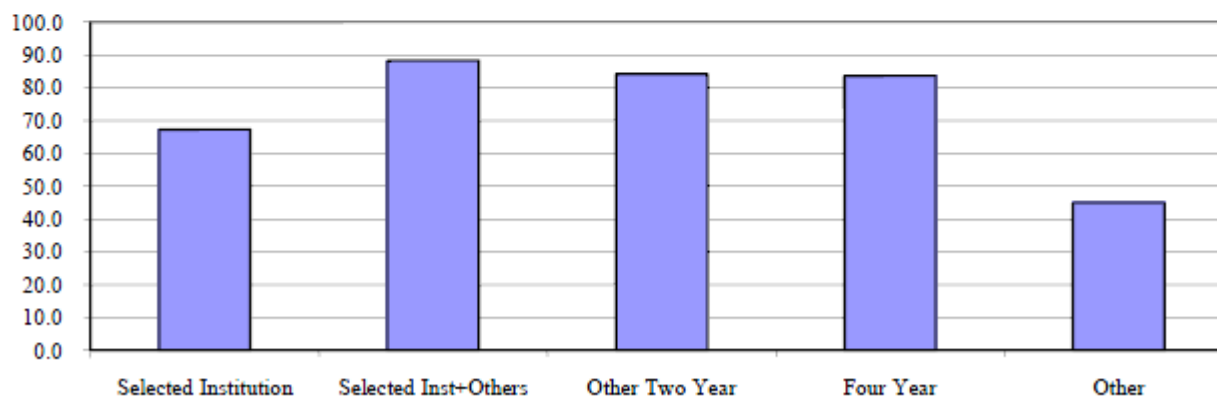


Award/Hours Earned Prior to Transfer Fall 2010 On-Campus Undergraduate Students

Sample Institution

Group	Total Transfers	AA	GenEd	<=30	30.1-59.9	60+	Avg Hrs Transferred
Selected Institution	146	18%	6%	7%	25%	43%	67.2
Selected Inst+Others	132	15%	5%	2%	11%	65%	88.1
Other Two Year	825	19%	6%	3%	14%	54%	84.0
Four Year	698	2%	5%	8%	19%	48%	83.5
Other	80			5%	4%	1%	44.9
Total	1,881	11%	5%	5%	16%	50%	82.5

Average Hours Transferred by Group



Data

- ❑ Performance
 - ❑ Transfer versus first term GPA
 - ❑ Term grades
 - ❑ Cumulative GPA
 - ❑ Graduation GPA

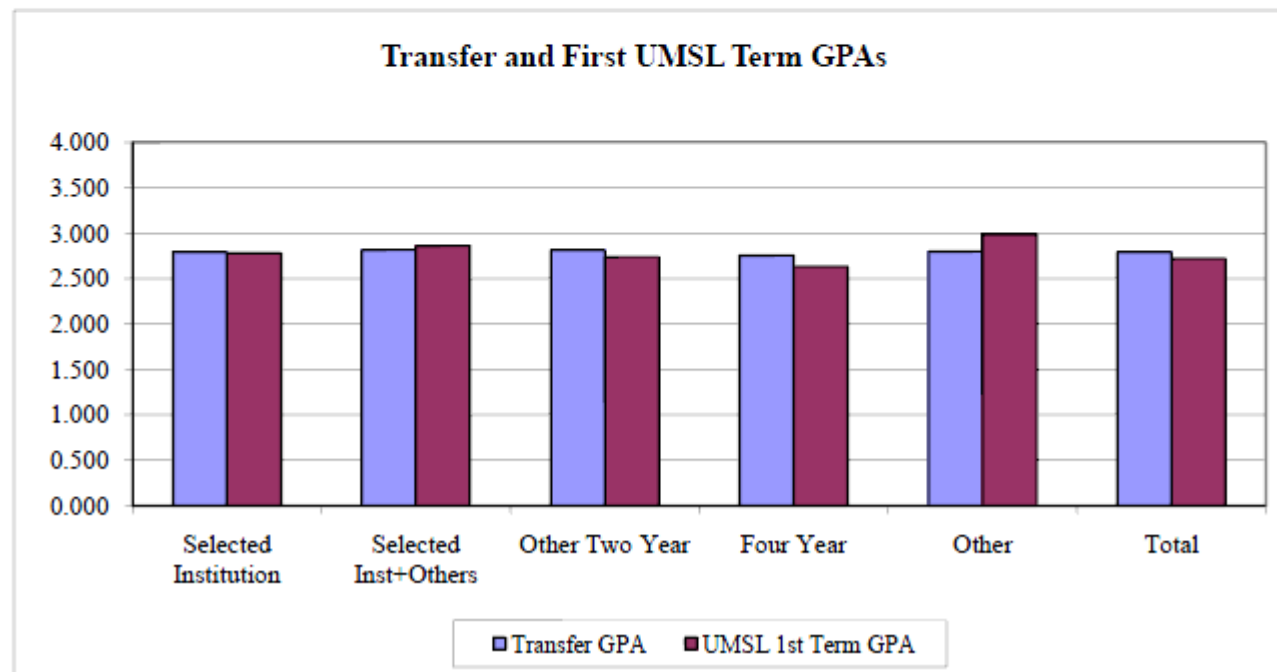


GPA Comparison for New Fall 2010 Transfer On-Campus Undergraduate Students

Sample Institution

Group	Total Transfers w/ Both GPAs	Transfer GPA	UMSL 1st Term GPA
Selected Institution	140	2.791	2.778
Selected Inst+Others	128	2.816	2.858
Other Two Year	775	2.812	2.739
Four Year	542	2.753	2.630
Other	6	2.799	2.983
Total	1,591	2.790	2.716

Transfer and First UMSL Term GPAs

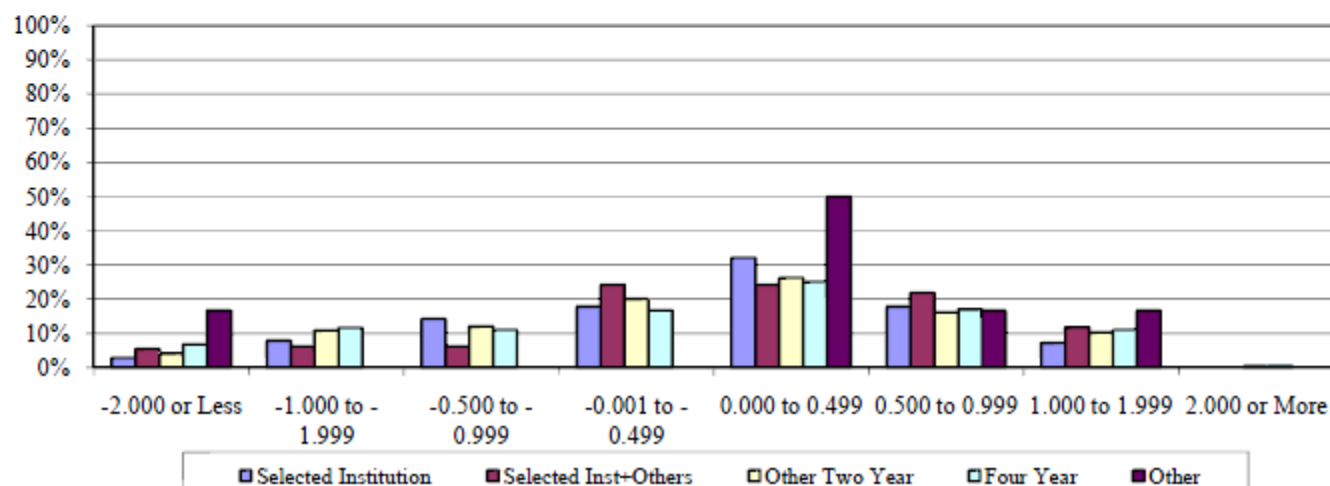


Transfer vs. First-Term UMSL GPA Fall 2010 On-Campus Undergraduate Students

Sample Institution

Group	Total Transfers	-2.000 or Less	-1.000 to -0.999	-0.500 to -0.499	-0.001 to -0.499	0.000 to 0.499	0.500 to 0.999	1.000 to 1.999	2.000 or More
Selected Institution	140	3%	8%	14%	18%	32%	18%	7%	0%
Selected Inst+Others	128	5%	6%	6%	24%	24%	22%	12%	0%
Other Two Year	775	4%	11%	12%	20%	26%	16%	10%	0%
Four Year	542	7%	12%	11%	17%	25%	17%	11%	1%
Other	6	17%	0%	0%	0%	50%	17%	17%	0%
Total	1,591	5%	10%	11%	19%	26%	17%	10%	0%

Transfer and First UMSL Term GPA Differences

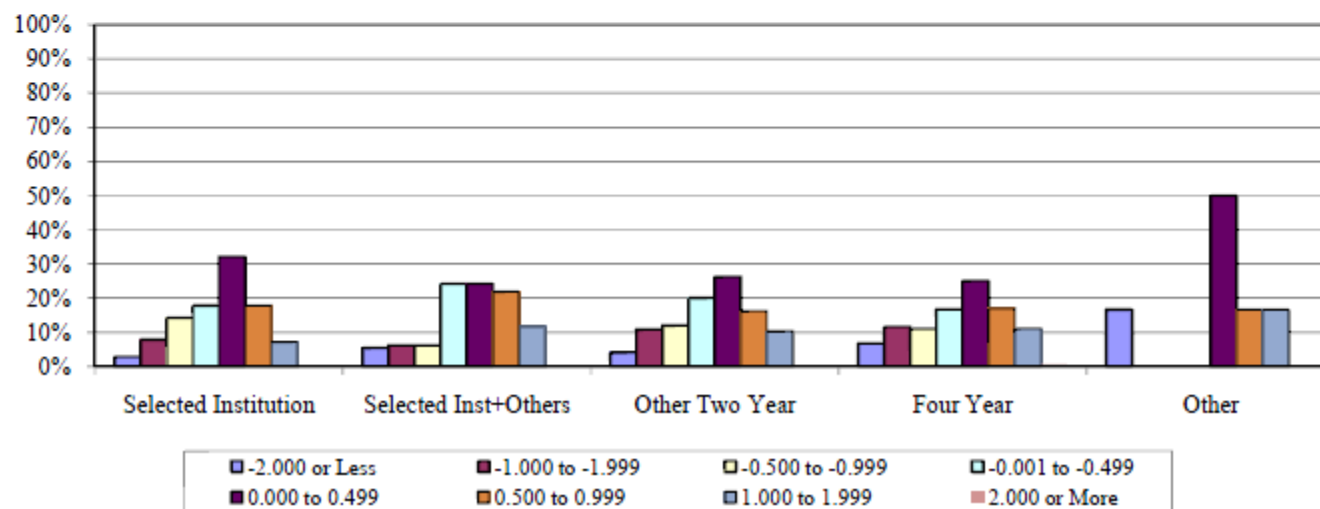


Transfer vs. First-Term UMSL GPA Fall 2010 On-Campus Undergraduate Students

Sample Institution

Group	Total Transfers	-2.000 or Less	-1.000 to -0.999	-0.500 to -0.001 to -0.499	-0.001 to -0.499	0.000 to 0.499	0.500 to 0.999	1.000 to 1.999	2.000 or More
Selected Institution	140	3%	8%	14%	18%	32%	18%	7%	0%
Selected Inst+Others	128	5%	6%	6%	24%	24%	22%	12%	0%
Other Two Year	775	4%	11%	12%	20%	26%	16%	10%	0%
Four Year	542	7%	12%	11%	17%	25%	17%	11%	1%
Other	6	17%	0%	0%	0%	50%	17%	17%	0%
Total	1,591	5%	10%	11%	19%	26%	17%	10%	0%

Transfer and First UMSL Term GPA Differences



Data

- ❑ Term Grades
 - ❑ Aggregation levels
 - ❑ Campus
 - ❑ School/college
 - ❑ Curriculum
 - ❑ Course



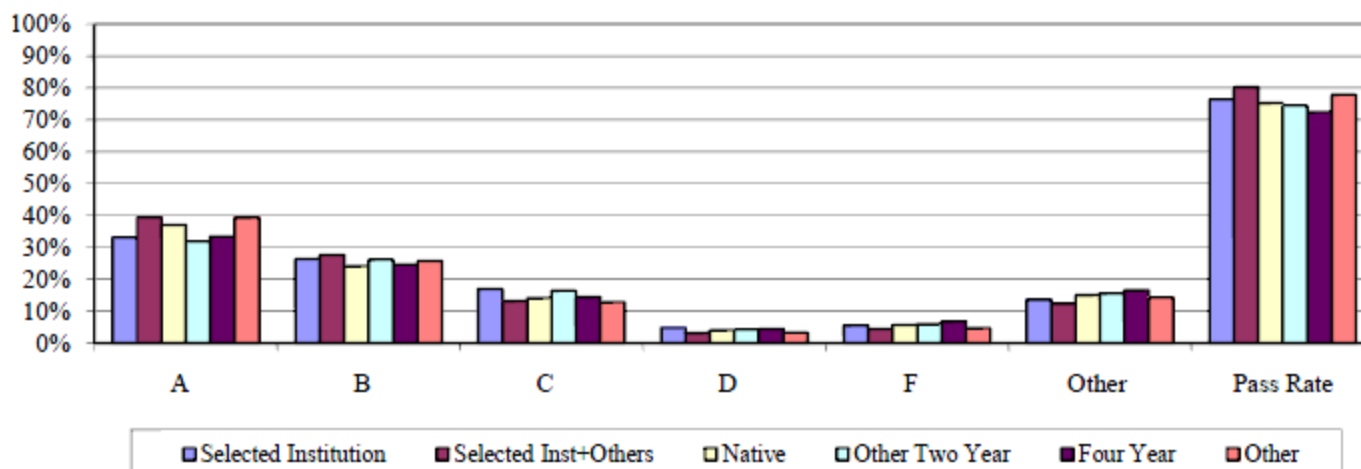
Fall 2010 - Comparison of Performance by Student Group

Sample Institution

All Units

Group	N	Grades - All Course Levels							GPA
		A	B	C	D	F	Other	Pass Rate	
Selected Institution	1,938	33%	26%	17%	5%	5%	14%	76%	2.864
Selected Inst+Others	2,359	39%	28%	13%	3%	4%	12%	80%	3.026
Native	9,824	37%	24%	14%	4%	6%	15%	75%	2.854
Other Two Year	11,826	32%	26%	16%	4%	6%	15%	74%	2.823
Four Year	8,936	33%	25%	14%	4%	7%	17%	72%	2.842
Other	2,266	39%	26%	13%	3%	5%	14%	78%	3.020

Grade Distribution by Student Group - All Course Levels



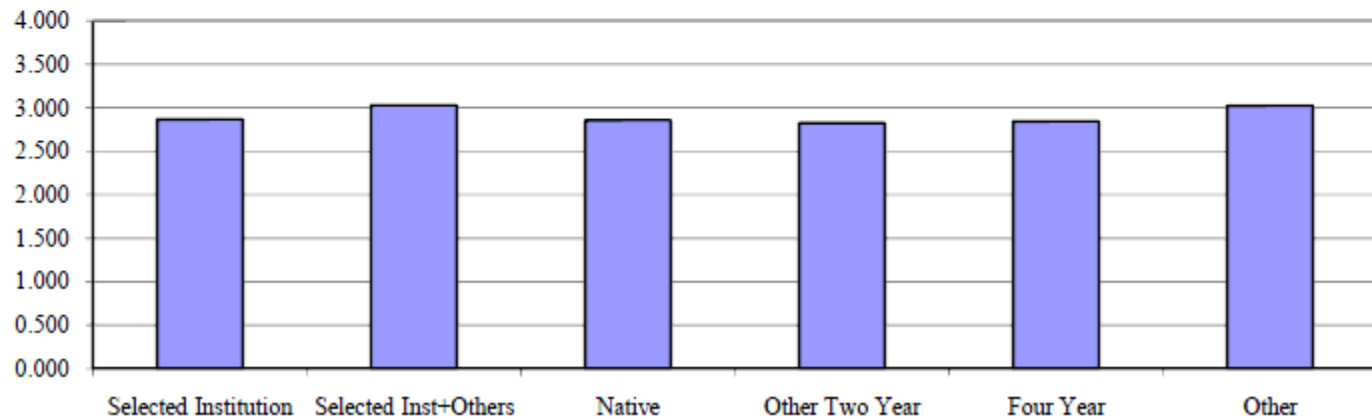
Fall 2010 - Comparison of Performance by Student Group

Sample Institution

All Units

Group	N	Grades - All Course Levels						Pass Rate	GPA
		A	B	C	D	F	Other		
Selected Institution	1,938	33%	26%	17%	5%	5%	14%	76%	2.864
Selected Inst+Others	2,359	39%	28%	13%	3%	4%	12%	80%	3.026
Native	9,824	37%	24%	14%	4%	6%	15%	75%	2.854
Other Two Year	11,826	32%	26%	16%	4%	6%	15%	74%	2.823
Four Year	8,936	33%	25%	14%	4%	7%	17%	72%	2.842
Other	2,266	39%	26%	13%	3%	5%	14%	78%	3.020

GPA by Student Group - All Course Levels



**FS2010 Term and Cumulative Campus Grade Point Average for Students from
Sample Institution**

Academic Unit	Group	N	Term GPA		Cumulative GPA	
			Weighted	Un-Weighted	Weighted	Un-Weighted
College of Arts & Sciences						
	Selected Institution	181	2.693	2.645	2.949	2.691
	Selected Inst+Others	216	2.807	2.757	2.943	2.749
	Native	957	2.784	2.686	2.987	2.751
	Other Two Year	1,306	2.651	2.555	2.865	2.661
	Four Year	884	2.660	2.595	2.817	2.632
	Other	168	2.809	2.684	3.044	2.723
	Total	3,712	2.710	2.620	2.905	2.687
College of Business Adminstrtn						
	Selected Institution	153	2.674	2.624	2.861	2.668
	Selected Inst+Others	183	2.995	2.963	2.920	2.815
	Native	454	2.816	2.717	2.890	2.748
	Other Two Year	732	2.699	2.625	2.830	2.696
	Four Year	476	2.671	2.580	2.836	2.649
	Other	156	2.958	2.897	3.118	2.973
	Total	2,154	2.764	2.682	2.875	2.725
College of Education						
	Selected Institution	83	3.418	3.333	3.269	3.146
	Selected Inst+Others	83	3.418	3.378	3.293	3.182
	Native	189	3.096	3.026	3.166	2.937
	Other Two Year	418	3.261	3.169	3.246	3.091
	Four Year	342	3.125	3.006	3.093	2.869
	Other	53	3.353	3.254	3.381	3.277
	Total	1,168	3.219	3.128	3.190	3.019



Data

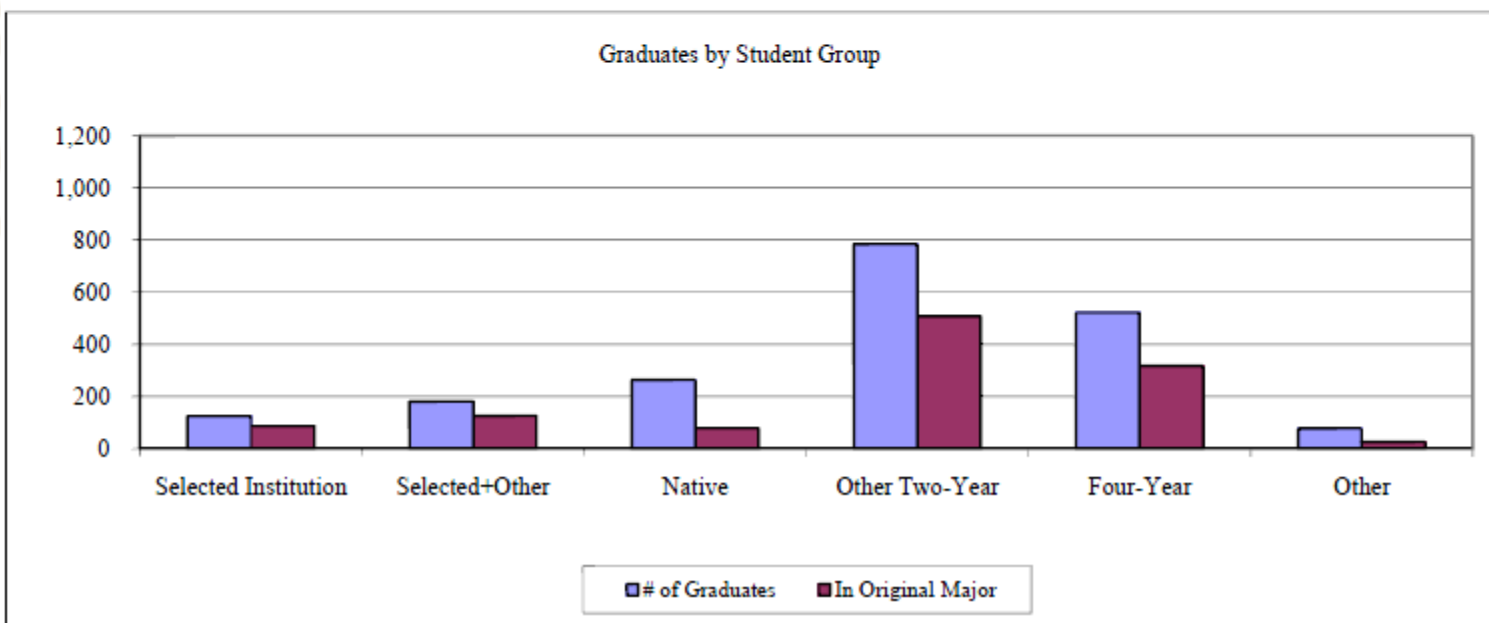
- ❑ Degree Recipients
 - ❑ Number of graduates
 - ❑ Graduation GPA
 - ❑ Years to graduation
 - ❑ Hours taken
 - ❑ Terms attended



Selected Measures for FY2010 Bachelors Degree Recipients by Student Group

Sample Institution

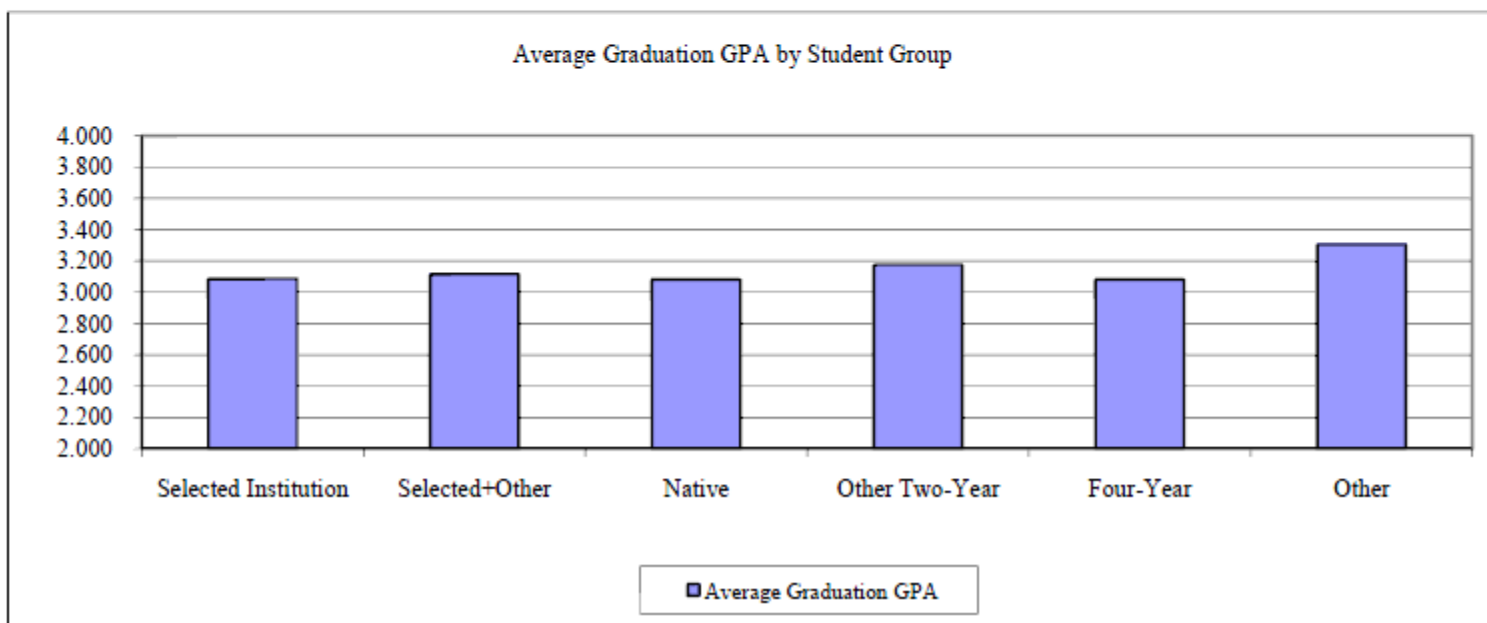
Group	# of Graduates	In Original Major	Graduation GPA					Years to Graduation				
			Min	Mean	Median	Max	Std	Min	Mean	Median	Max	Std
Selected Institution	124	86	2.096	3.086	3.094	3.985	0.494	1	4.5	3.0	41	0.74
Selected+Other	180	125	1.858	3.115	3.091	4.000	0.520	1	4.0	3.0	29	0.52
Native	263	78	2.101	3.081	3.100	4.000	0.458	3	7.2	5.0	35	1.82
Other Two-Year	783	506	1.990	3.175	3.228	4.000	0.526	1	4.0	3.0	30	0.69
Four-Year	521	316	1.960	3.081	3.090	4.000	0.510	1	4.3	3.0	31	0.58
Other	77	25	2.065	3.305	3.367	3.994	0.428	1	5.5	5.0	39	1.64



Selected Measures for FY2010 Bachelors Degree Recipients by Student Group

Sample Institution

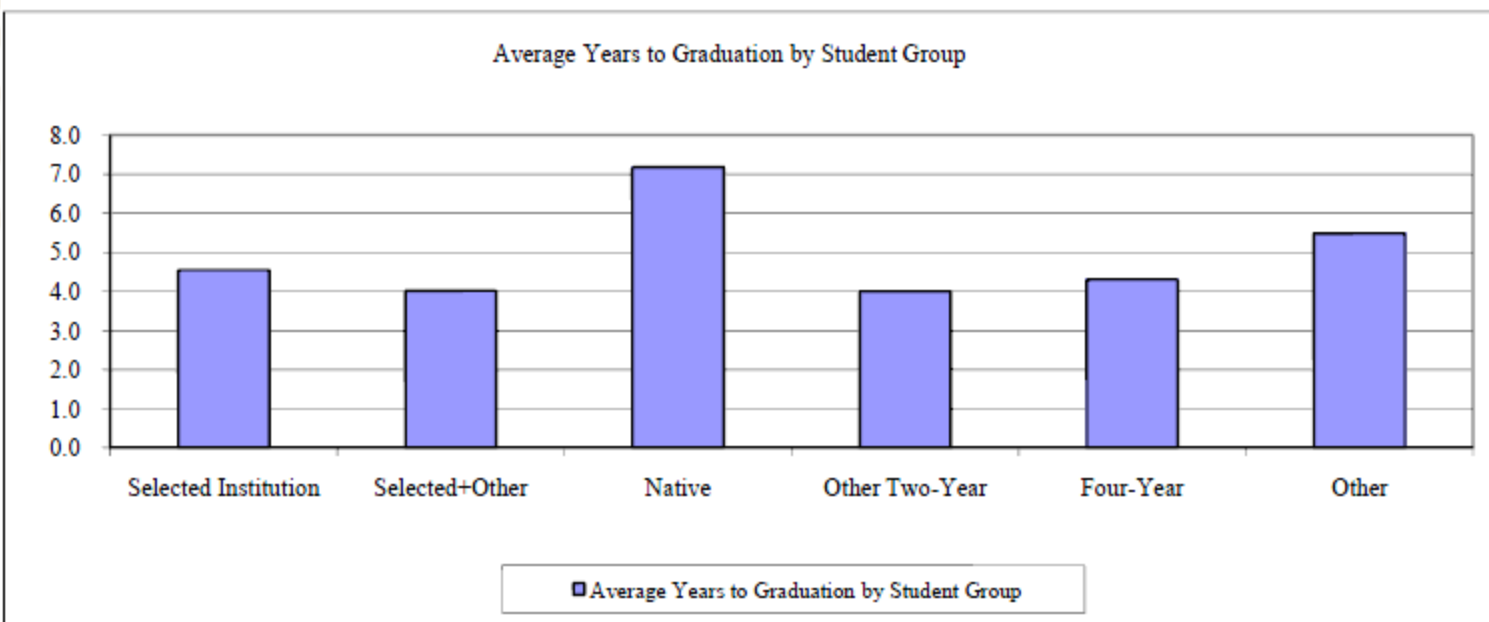
Group	# of Graduates	In Original Major	Graduation GPA					Years to Graduation				
			Min	Mean	Median	Max	Std	Min	Mean	Median	Max	Std
Selected Institution	124	86	2.096	3.086	3.094	3.985	0.494	1	4.5	3.0	41	0.74
Selected+Other	180	125	1.858	3.115	3.091	4.000	0.520	1	4.0	3.0	29	0.52
Native	263	78	2.101	3.081	3.100	4.000	0.458	3	7.2	5.0	35	1.82
Other Two-Year	783	506	1.990	3.175	3.228	4.000	0.526	1	4.0	3.0	30	0.69
Four-Year	521	316	1.960	3.081	3.090	4.000	0.510	1	4.3	3.0	31	0.58
Other	77	25	2.065	3.305	3.367	3.994	0.428	1	5.5	5.0	39	1.64



Selected Measures for FY2010 Bachelor's Degree Recipients by Student Group

Sample Institution

Group	# of Graduates	In Original Major	Graduation GPA					Years to Graduation				
			Min	Mean	Median	Max	Std	Min	Mean	Median	Max	Std
Selected Institution	124	86	2.096	3.086	3.094	3.985	0.494	1	4.5	3.0	41	0.74
Selected+Other	180	125	1.858	3.115	3.091	4.000	0.520	1	4.0	3.0	29	0.52
Native	263	78	2.101	3.081	3.100	4.000	0.458	3	7.2	5.0	35	1.82
Other Two-Year	783	506	1.990	3.175	3.228	4.000	0.526	1	4.0	3.0	30	0.69
Four-Year	521	316	1.960	3.081	3.090	4.000	0.510	1	4.3	3.0	31	0.58
Other	77	25	2.065	3.305	3.367	3.994	0.428	1	5.5	5.0	39	1.64

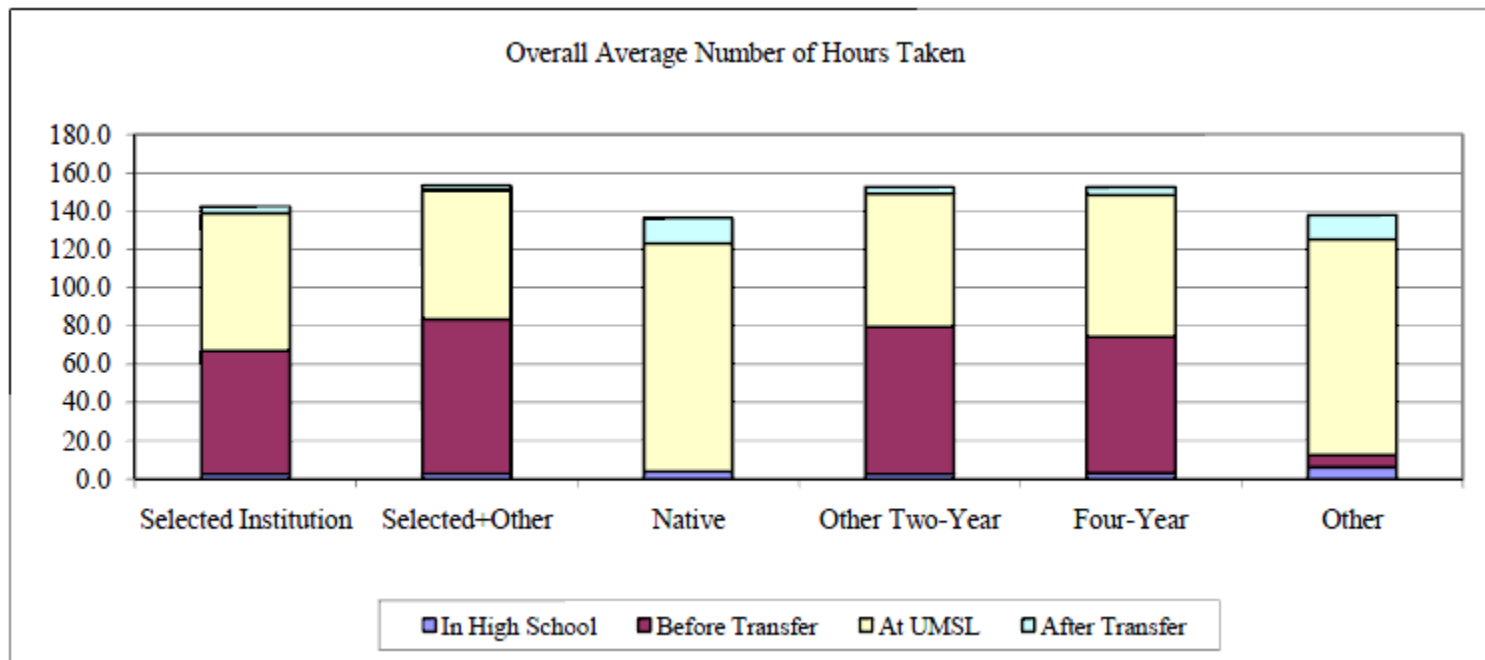


Hours Taken by FY2010 Undegraduate Degree Recipients by Group and Time in Academic Career

Sample Institution

Group	Time Taken in Academic Career	# of Graduates	Overall Mean	Actually Taking Courses for College Credit					
				N	Min	Mean	Median	Max	Std
Selected Institution	In High School	124	2.5	29	3	10.5	8	45	9.65
	Before Transfer		64.5	124	3	64.5	66.5	109	19.48
	At UMSL		72.0	124	35	72.0	69	119	15.01
	After Transfer		3.6	40	1	11.2	7	38	9.89
Selected+Other	In High School	180	2.7	53	1	9.3	6	36	7.85
	Before Transfer		80.7	180	26	80.7	77	217.5	30.13
	At UMSL		67.6	180	25	67.6	65.5	150	19.94
	After Transfer		2.4	49	1	8.9	6	40	8.65
Native	In High School	263	3.9	101	1	10.2	8	40	7.49
	Before Transfer		119.2	263	39	119.2	121	201	24.26
	At UMSL		13.2	117	0.5	29.7	13	129.4	32.50
	After Transfer								
Other Two-Year	In High School	783	2.3	211	1	8.6	6	49	6.34
	Before Transfer		77.3	783	3	77.3	73	270.4	30.52
	At UMSL		69.5	783	9	69.5	66	177	21.24
	After Transfer		3.6	231	1	12.1	7	108	15.25
Four-Year	In High School	521	3.0	158	1	10.0	8.85	59	7.89
	Before Transfer		71.5	521	1	71.5	69	215	38.16
	At UMSL		74.1	521	18	74.1	72	178	26.79
	After Transfer		3.9	119	3	17.1	8	116	20.80
Other	In High School	77	6.2	31	3	15.5	12	90	15.91
	Before Transfer		6.3	59	0.5	8.3	1	143	24.08
	At UMSL		112.7	77	33	112.7	123	185	28.18
	After Transfer		12.7	34	3	28.7	10	120	31.74



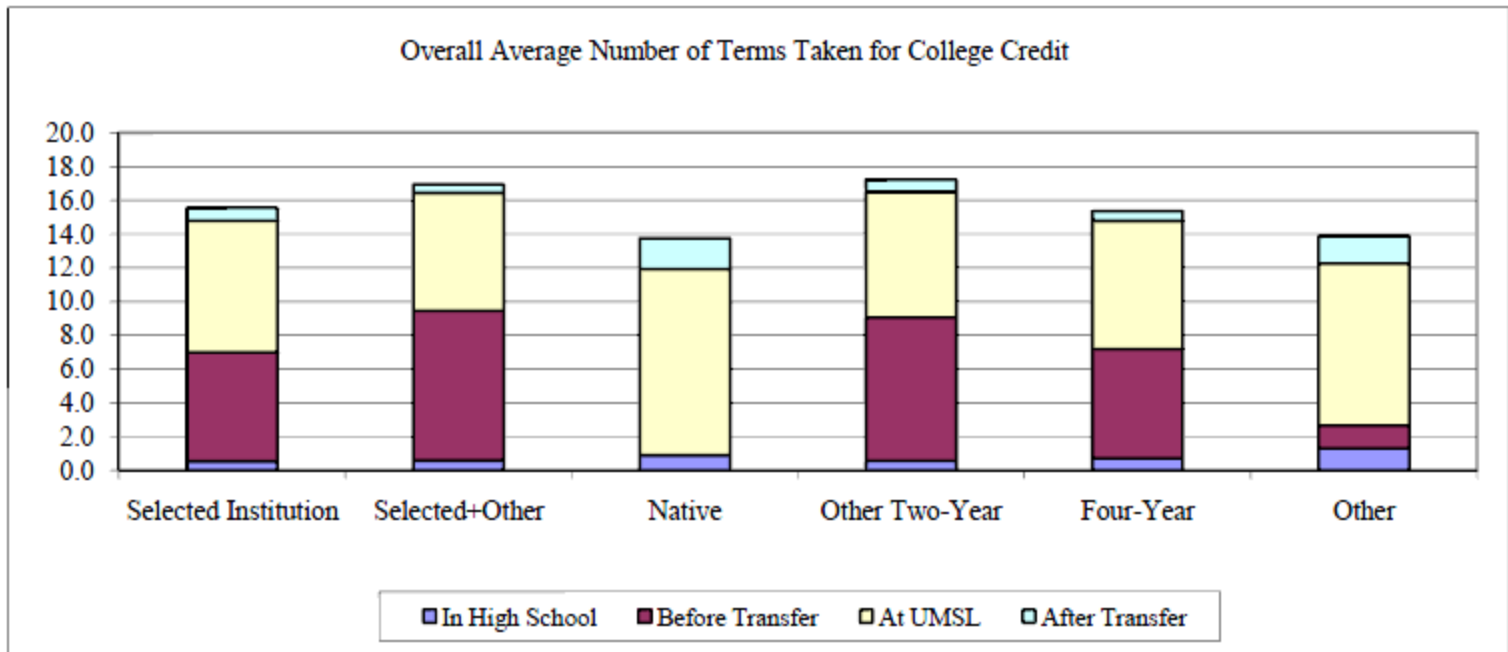


Terms of College Credit Taken by FY2010 Undegraduate Degree Recipients by Group and Time in Academic Career

Sample Institution

Group	Time Taken in Academic Career	# of Graduates	Overall Mean	Actually Taking Courses for College Credit					
				N	Min	Mean	Median	Max	Std
Selected Institution	In High School	124	0.5	29	1	2.3	2	5	1.44
	Before Transfer		6.5	124	1	6.5	6	14	2.59
	At UMSL		7.8	124	3	7.8	7	22	3.47
	After Transfer		0.7	40	1	2.3	2	7	1.71
Selected+Other	In High School	180	0.6	53	1	2.0	1	7	1.44
	Before Transfer		8.9	180	2	8.9	8	31	4.34
	At UMSL		7.0	180	2	7.0	6	16	2.60
	After Transfer		0.5	49	1	1.9	1	7	1.40
Native	In High School	263	0.9	101	1	2.3	2	7	1.46
	Before Transfer								
	At UMSL		11.0	263	4	11.0	10	23	2.91
	After Transfer		1.8	117	1	4.1	2	18	3.97
Other Two-Year	In High School	783	0.6	211	1	2.1	2	11	1.40
	Before Transfer		8.5	783	1	8.5	7	38	4.49
	At UMSL		7.5	783	2	7.5	7	34	3.30
	After Transfer		0.7	231	1	2.3	2	16	2.14
Four-Year	In High School	521	0.7	158	1	2.4	2	11	1.54
	Before Transfer		6.5	521	1	6.5	6	32	4.37
	At UMSL		7.6	521	1	7.6	7	30	3.49
	After Transfer		0.6	119	1	2.5	1	10	2.24
Other	In High School	77	1.3	31	1	3.3	3	15	2.67
	Before Transfer		1.3	59	1	1.7	1	14	2.41
	At UMSL		9.6	77	4	9.6	10	16	1.99
	After Transfer		1.6	34	1	3.7	2	17	4.00





Data

- ❑ Graduation Rates
 - ❑ Traditional methodology
 - ❑ NCAA methodology

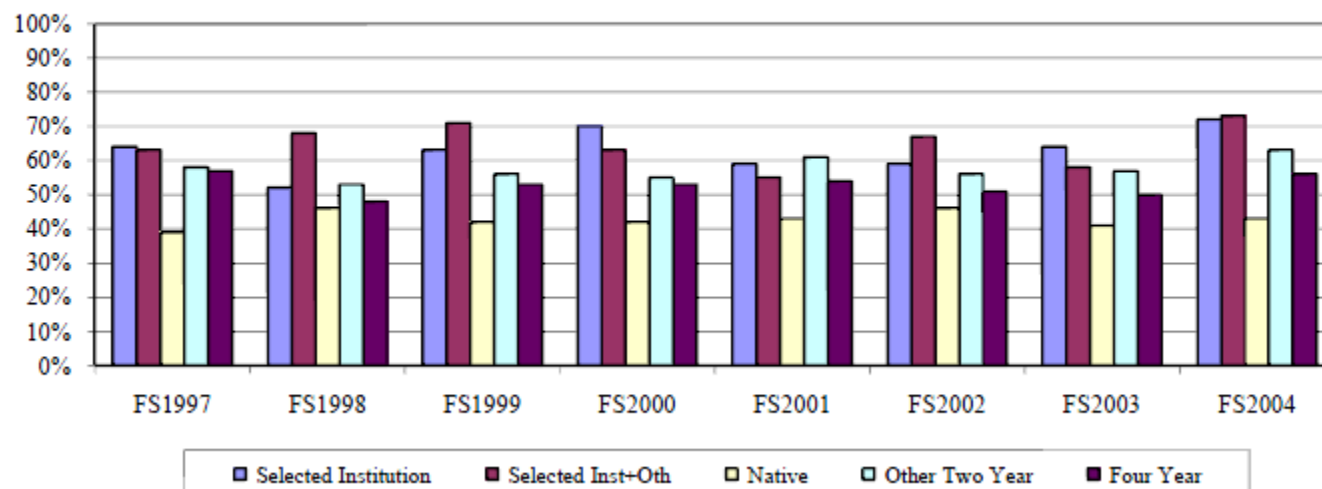


**Retention and Graduation Rates for First-Time, Full-Time, Degree-Seeking Students Last Attending
Sample Institution**

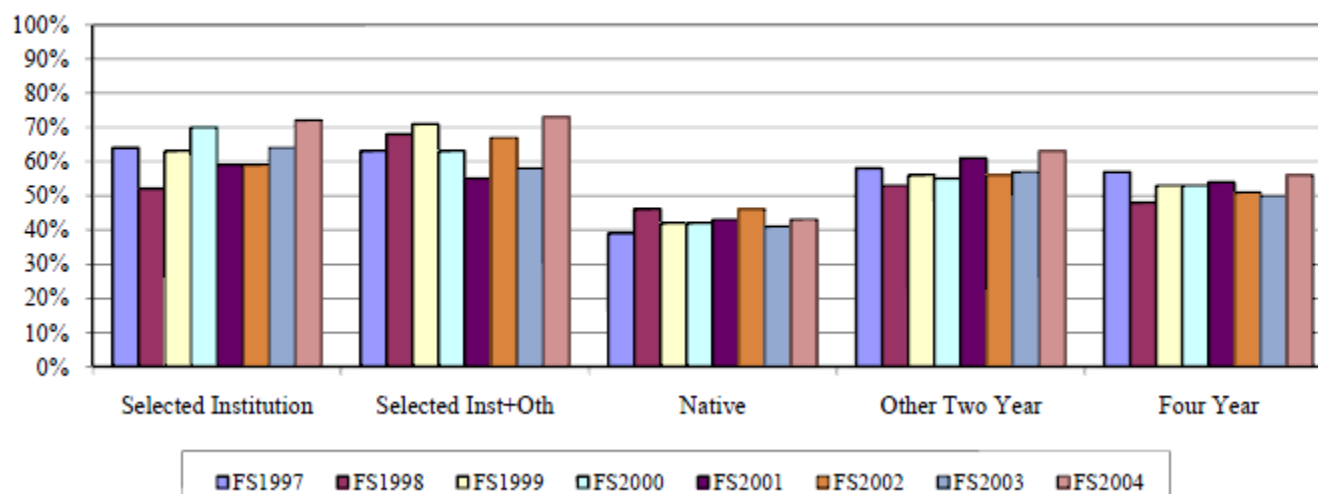
Term	Group	N	Retention Rates						Graduation Rates			
			1st FS to W/S	1st FS to 2nd FS	3rd FS	4th FS	5th FS	6th FS	3Yr	4Yr	5Yr	6Yr
FS1997	Selected Institution	86	96%	81%	68%	19%	11%	5%	52%	60%	61%	64%
	Selected Inst+Oth	104	95%	88%	53%	20%	11%	9%	49%	57%	62%	63%
	Native	457	90%	70%	54%	51%	33%	15%		14%	32%	39%
	Other Two Year	316	95%	84%	53%	22%	11%	5%	40%	51%	56%	58%
	Four Year	334	97%	75%	48%	20%	9%	3%	39%	50%	56%	57%
	Other	148	32%	23%	10%	5%	3%		14%	18%	20%	20%
FS1998	Selected Institution	96	90%	72%	51%	25%	11%	2%	34%	45%	50%	52%
	Selected Inst+Oth	108	89%	81%	49%	18%	10%	7%	52%	60%	64%	68%
	Native	526	88%	69%	59%	55%	33%	15%	1%	22%	39%	46%
	Other Two Year	362	89%	74%	48%	19%	10%	6%	39%	49%	51%	53%
	Four Year	384	84%	67%	37%	15%	8%	4%	36%	43%	48%	48%
	Other	44	73%	55%	32%	11%	5%	2%	27%	39%	41%	41%
FS1999	Selected Institution	104	91%	83%	59%	18%	8%	6%	48%	60%	62%	63%
	Selected Inst+Oth	133	88%	78%	48%	20%	7%	4%	53%	65%	69%	71%
	Native	538	87%	65%	55%	52%	30%	12%	1%	22%	37%	42%
	Other Two Year	408	88%	73%	50%	23%	11%	7%	38%	48%	52%	56%
	Four Year	363	83%	65%	37%	18%	8%	6%	37%	46%	50%	53%
	Other	42	76%	41%	39%	17%			22%	37%	37%	37%



Traditional Six-Year Graduation Rates by Cohort



Traditional Six-Year Graduation Rates by Group

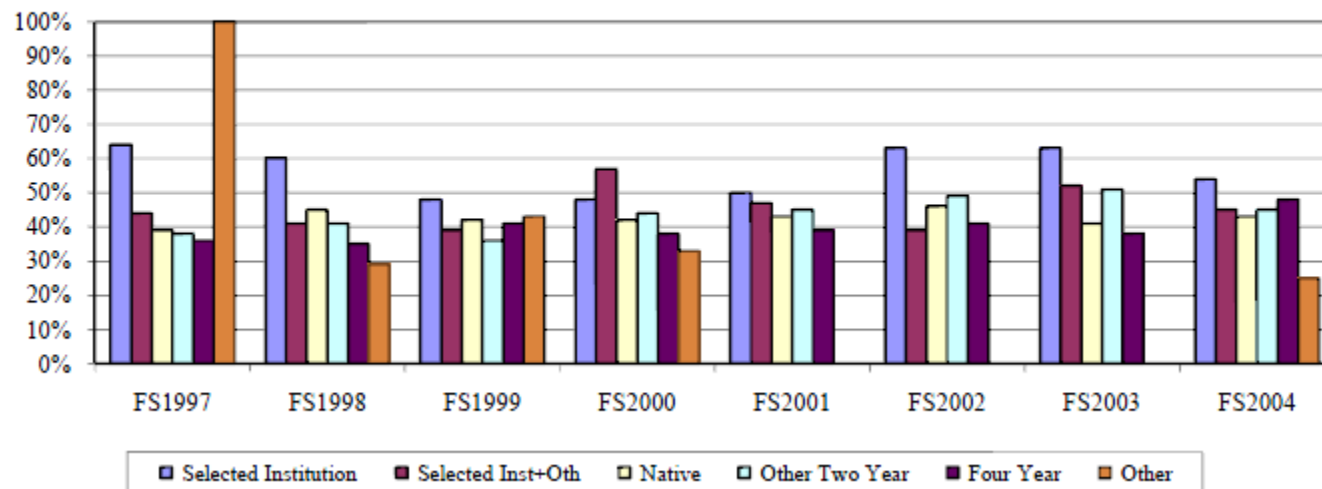


**Retention and Graduation Rates for First-Time, Full-Time, Degree-Seeking Students for
Sample Institution - NCAA Methodology**

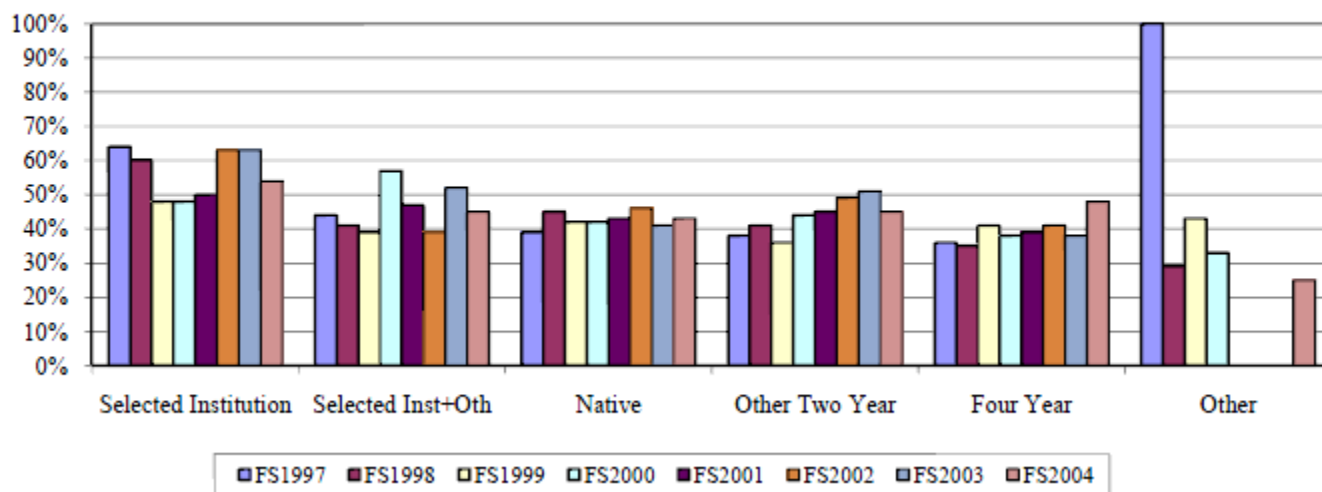
Term	Group	N	Graduation Rates			
			3Yr	4Yr	5Yr	6Yr
FS1997	Selected Institution	50	2%	24%	50%	64%
	Selected Inst+Oth	50	2%	14%	30%	44%
	Native	457	0%	14%	32%	39%
	Other Two Year	156	0%	11%	27%	38%
	Four Year	192	1%	10%	24%	36%
	Other	3	0%	33%	67%	100%
FS1998	Selected Institution	65	0%	20%	45%	60%
	Selected Inst+Oth	58	0%	17%	26%	41%
	Native	526	1%	22%	39%	45%
	Other Two Year	207	0%	14%	30%	41%
	Four Year	203	0%	8%	26%	35%
	Other	7	0%	14%	29%	29%
FS1999	Selected Institution	61	0%	11%	38%	48%
	Selected Inst+Oth	57	0%	11%	35%	39%
	Native	538	1%	22%	37%	42%
	Other Two Year	167	0%	14%	28%	36%
	Four Year	191	0%	17%	33%	41%
	Other	7	0%	43%	43%	43%



NCAA Six-Year Graduation Rates by Cohort



NCAA Six-Year Graduation Rates by Group



Uses

- ❑ Presentations to Boards
- ❑ Institutional effectiveness reviews
- ❑ Comparisons with other institutions
- ❑ Advising students
- ❑ Reinforce accomplishments



Uses

- ❑ Constructing performance indicators
- ❑ Reference source
- ❑ Cross-check data with other sources
- ❑ Diagnose performance issues
- ❑ Assist in transfer course development



Questions and Answers



Re-Visiting Feedback to Transfer-Originating Institutions

**COTA Conference on Transfer and Articulation
Columbia, Missouri
February 11, 2011**

**Mr. Lawrence W. Westermeyer
Director, Institutional Research
University of Missouri - St. Louis**

